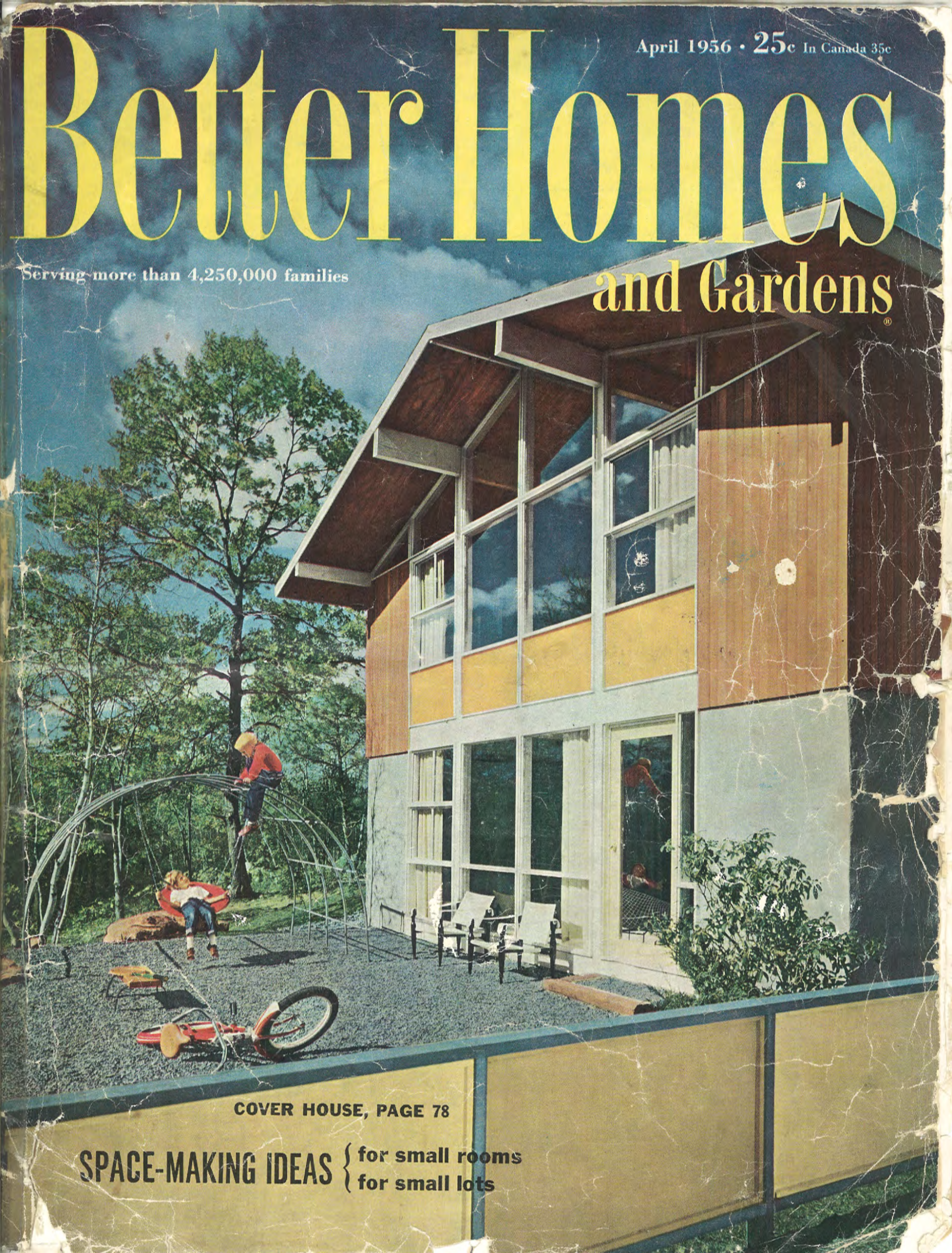


April 1956 • 25c In Canada 35c

# Better Homes

Serving more than 4,250,000 families

## and Gardens



COVER HOUSE, PAGE 78

**SPACE-MAKING IDEAS** { for small rooms  
for small lots

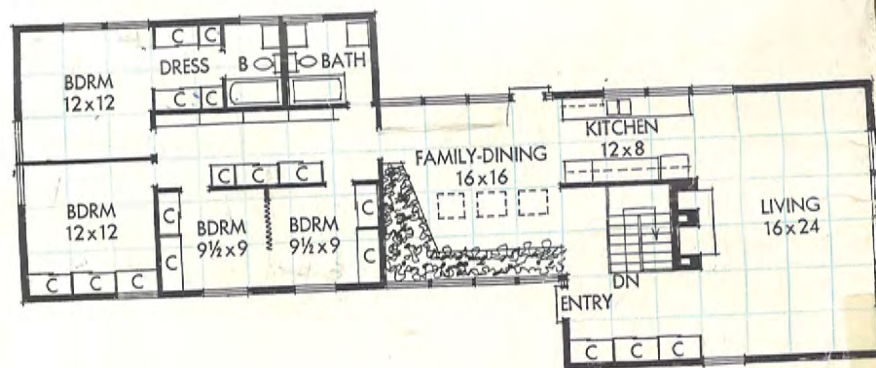




# A big house you can afford

*By Curtiss Anderson*

THE VALUE of a house is something more than bigness. It's design and plan, materials and methods. And here you'll see an outstanding value in a house produced nationally by modern mass-production methods. Its parts are prefabricated—from floor panels to exterior trim. You pay less per square foot for this prebuilt construction, to be sure, but the really exciting news is that you get no less of the things that mean *value*.



Based on four-foot module (shown by squares on plan), wall, floor, and ceiling panels, windows and doors are precut to modular scale. Construction is simple post and beam. Size is a whopping 1,853 square feet. Over-all dimensions are 77x24. Architect and builder: Carl Koch & Associates, Techbuilt, Inc., Cambridge, Massachusetts. Decorator: Cecille Sirotkin, Contract Interiors, Boston





Modular units are all 12- or 24-inch depths, allowing you to add panels, frames, drawers, or shelves as you like. Shelf units running length of the bedroom hall really put this often-neglected space to use. Similar combinations of units would make room or entrance divider



Architect Carl Koch designed units for just such versatile use as they get here in parents' bedroom. One wardrobe, used in conventional way, is attached to unit with drawers.

Extras include closet accessories like trouser hanger at right. Metal clips attach hanger, pole, and shelf to slotted frame.

Hardboard closet doors are wall-papered. Another treatment to compliment decorating: You can paint white hardboard with colored enamels, like entrance closets.



Furniture specially designed for hi-fi is in many leading lines this year.

Photographs: Lisanti, Alderman. Designer: Bill Barton

Turntable's in first section, records below. Tuner, amplifier are next with aluminum air vent below. Speaker's at the far end where vibrations won't jar record-player.

Tuner, amplifier, and, in this case, preamplifier, too, fit right behind this facing. Suspended on side, they can be removed for inspection by just lifting handles as shown





Great spaciousness of living room is not only in size, but also in height and glass-filled gable end. Preformed plywood panels serve as roof structure and ceiling, part of package that includes plywood-sheathed wall and floor panels. Four-foot module is best expressed by orderly repetition of supporting posts in gable



Children's rooms combine now with only folding screen, but frame-work is in for future glass and permanent partition. Coarse cotton fabric is used throughout, even as cover for freestanding wardrobe

Here's floor plan in a picture: You enter at far right where you meet stairs to basement or go straight to living room. Kitchen at left serves foreground family and dining room, the area that bridges the living and sleeping wings. Overhead plastic bubbles give soft, diffused daylight for dining and planting canal. Wall to the right is red cedar siding



It's an easier transition to Modern house when there is the familiar feeling of things you've lived with—like old-brick fireplace. And in the way of new materials, turn to colorful use of hardboard panels of entrance closets. Look what you gain in visual dimensions with sweep-across view, right of fireplace







Architect Carl Koch developed five variations of the packaged house plan we show here. All vary in size—from this, the largest house, to a three-bedroom, 1,135-square-foot rectangle.

Living and sleeping wings are essentially the same, but the connecting wing is flexible. In the smallest house, the central family room is reduced to an entrance area alone.



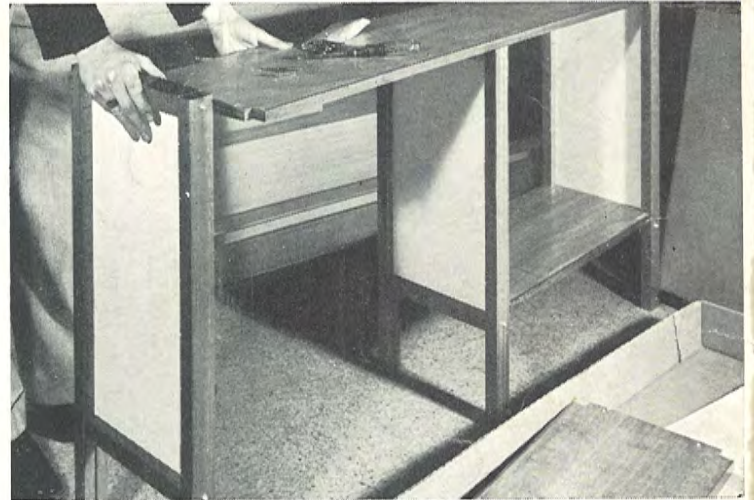
Stairs to basement are given prominence (and convenience) in central location off entrance hall—and for good reason. Basement is not usual type, but fully daylighted on one side (see picture below). Variations of plan are mainly changes in this entrance/family-room area



Fully daylighted room in basement is result of exposing foundation wall where land contour permitted. What you gain in living space is more than worth search for right lot or even cost of excavating level lot. Fireplace has common foundation with one above in living room

## Something new in storage

*Here are freestanding storage units you buy in a package and assemble yourself.*



Like the one-foot-deep shelf unit being assembled above, wardrobes, desks, chests, dividers are all shipped knocked down. Prefinished panels practically assemble themselves. Screwdriver is all you need. Units are Philippine mahogany; white side panels are tempered hardboard



Units will conform to any decorating scheme. You can insert fabric in grooved doorframes with plastic cord (as shown). Your tool, again, is simply a screwdriver. In this children's room (seen in color inside), fabric was selected to match bedspreads and draperies.

Hardware and instructions for assembly of freestanding wardrobe are included in shipping package of knocked-down parts.

Where units are attached to wall, as here, back panels may be omitted.

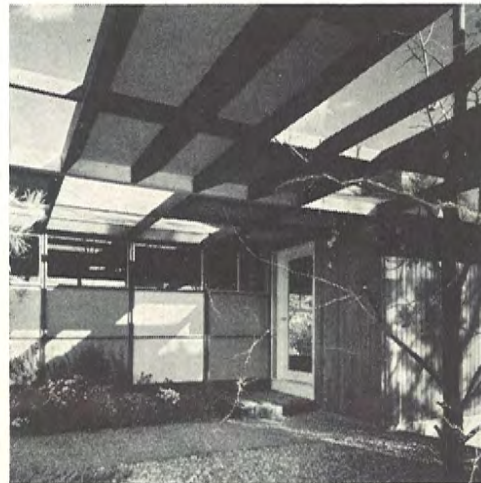




Picture on the cover shows this two-story end where concrete foundation walls enclose daylight living space in "basement." Vibrant panels and glass in four-foot widths are part of many ideas in house of prefabricated parts



Most important link between indoors and outdoors is family room. Gardened and gravel-paved terrace is made easy to use and serve from centrally located room that bridges living and sleeping wings



Carport roof becomes interesting trellis, serving as covered passage to entrance door. Open and closed grids are a quite effective shading device

Photographs: Lisanti, Alderman



Like house itself, double carport is exciting in its simplicity. Its outside walls are merely framed vertical board fence fastened to carport posts. Panels, used

everywhere logical on exterior, or less costly substitute for glass, brighter substitute for conventionally used materials. The exterior siding is redwood



*Reprinted and distributed Courtesy of  
Techbuilt, Inc.*

Reprinted from *Better Homes & Gardens* magazine, April 1956

Copyright, 1956, Meredith Publishing Company, Des Moines 3, Iowa

Printed in U.S.A.